

EXPERIENCES

AT MATFEN HALL



MATFEN HALL

COUNTRY HOTEL, SPA & GOLF ESTATE

WILD NORTHUMBERLAND



An ancient land of rolling hills, open skies and boundless seas - Northumberland will capture your heart. Whether on foot, by boat or on horseback - discover the peaceful magic and wild charm of England's hidden gem with bespoke experiences and chauffeured tours.

Each experience is completely bespoke and tailor-made to your requirements.

To book, please get in touch with our Concierge Team who will help to bring your Northumbrian adventure to life.



WILD MAGIC

Northumberland is home to UNESCO World Heritage sites, more castles than any county in England and an International Dark Sky Park. Experience the unforgettable in a place where history and magic come together.



STARGAZING MAGIC AT KIELDER OBSERVATORY

As night falls, the skies come to life. Twinkling, bright and unbelievably clear - Northumberland International Dark Sky Park is Europe's largest area of protected night sky.

Whisper through dark countryside, travelling by chauffeur to Kielder Observatory for an unforgettable stargazing experience.

Return to warm up with a midnight feast and luxury hot chocolate by the fire.



A WIZARD'S TALE AT ALNWICK CASTLE

Home to Hogwarts, Alnwick Castle is a magical experience for wizards of all ages. Meet your driver at our very own Platform 9 3/4 to journey to the set of the first two Harry Potter films. Discover more about Northumberland's cinematic connections from your private driver-guide as you roll through scenic landscapes.

Arrive to tour 950-year-old Alnwick Castle, the second-largest inhabited castle in England where grand state rooms, history treasures and broomstick lessons await.





BY LAND

England's historic border land and most peaceful National Park, Northumberland is your invitation to experience wild, untamed beauty at its most majestic.



GUIDED WALKING TOURS

Stretching 73 miles from coast to coast, Hadrian's Wall once guarded the northernmost reaches of the Roman Empire. Now a UNESCO World Heritage Site, it's just minutes from the estate and yours to explore.

Arrive by chauffeur and step into 2000 years of history with a knowledgeable local guide by your side. Walk in the footsteps of legionaries as the landscape falls away to reveal spectacular, panoramic views.

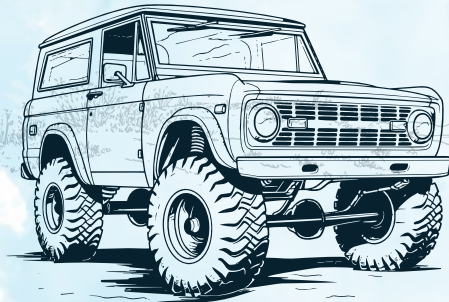
HORSE RIDING

Over moor and through dale, from silver mine trails to the night riding and wild romance of the Border reivers, Northumberland's history comes vividly to life on horseback. Trot across open moorland with a guided pony trekking experience, taking in views of the Cheviot Hills and meeting native curlew, grouse and deer. Return by chauffeur to relax in comfort with a pamper pack waiting in your room.



NORTHUMBERLAND 250

If four wheels are more your scene, Northumberland 250 is the adventure for you. Designed for thrill-seekers, we'll set you up with a classic 4x4 car, ready to tackle the craggy hills, open moorland and wild shores of this scenic 250-mile trail. Take to the wheel yourself, or let our driver lead the way as you drink in the sights and a glass of chilled Laurent-Perrier champagne.



AD GEFRIN

Travel back to the 7th century to experience the true spirit of our wild landscape at Ad Gefrin Whisky Distillery. Take a private tour of the distillery to uncover the secrets of Anglo Saxon Northumberland before sampling a flight of single malts made using ancient methods, clear Cheviot water and malted barley grown by local farmers.



HEPPLE WILDS

Ancient juniper, Douglas fir, wild heather and cold clear water - dive headfirst into the flavours of Northumberland at Hepple Gin distillery. Take a walk on the wild side to pick wild botanicals during a private foraging tour of their rugged Coquetdale estate before savouring a tasting flight, perfectly paired with Northumbrian cheese and charcuterie.



RABY CASTLE BY APPOINTMENT

Your carriage awaits, taking you from our tranquil estate to the wild history of Raby Castle. A striking medieval fortress, it is renowned its rebellious past and appearances in film and television.

Take in the stunning landscapes of the Durham dales en route before arriving for a private tour of this ancient castle. Explore the newly imagined and award-winning 18th century Walled Garden before wandering freely through the castle's grand state rooms, steeped in centuries of stories.



MEETING EARL GREY

Travel by chauffeur to the green, blossoming landscape of Howick Hall. Stroll the gardens, famed for their elegant design and botanical beauty. Breathe in spectacular seasonal displays and relax in quiet, tranquil landscapes.

Step inside to discover the Grey family home and the birthplace of the iconic Earl Grey tea. During a private tour, your guide will share fascinating stories of this little-known but historic estate and its influential past. End the day in elegance with a traditional Earl Grey Afternoon Tea, served in regal surroundings and offering a perfect blend of relaxation and refinement.



THE LAND OF THE PRINCE BISHOPS

A day steeped in history and culture awaits. Relax during a journey that takes you through scenic Northumberland and into the Durham dales, and the land of the Prince Bishops.

Begin with a tour of Auckland Palace, carefully restored to reveal the spectacular former residence of the powerful Prince Bishops of Durham. Spend time in Durham City, taking in views of the iconic cathedral and castle and soaking up the unique culture and atmosphere of this UNESCO World Heritage Site.



BIRDWATCHING

From upland to woodland, dawn to dusk, our local birdwatching expert knows when and where to spot birdlife in Northumberland. Take coffee, fresh pastries and birdwatching packs on a day tour dedicated to native wildlife. Travelling by chauffeur, sight golden plover, wagtails and curlews on bright, windswept hillsides and step into the shade of Kielder Forest to meet crossbills, goshawks and endangered osprey.



FALCONRY DAYS

Owls, kestrels, hawks and falcons - get up close to Northumberland's wild birds of prey with a private Falconry Experience Day. Safe and sustainable, get to know rescued and rehabilitated birds, take part in flying them yourself and enjoy a truly unforgettable hands-on experience the whole family will enjoy.

BY SKY

Wide open skies, moorland rich with purple heather and hushed, peaceful woodland combine to turn Northumberland into an oasis for native birdlife.





BY WATER

An Area Of Outstanding Natural Beauty in its own right, the Northumbrian coastline is a peaceful haven for coastal wildlife. While the River Tyne wends its way through hill and dale, offering up tranquil nooks and crannies for keen anglers.



COASTAL ADVENTURE

A day to treasure. Travel by chauffeur to catch dawn's light glittering on the North Sea as you enjoy hot coffee and fresh bacon rolls on Bamburgh Beach. Step aboard a private boat tour of the Farne Islands to watch for seals and meet the island's endangered colony of puffins. Return to land for a tour of famous Bamburgh Castle and a freshly-made beach picnic.



FISHING EXPERIENCE

An age-old pastime, fishing is at its best in the River Tyne. Cast off with confidence with an expert by your side. Our local fishing guide offers a lifetime of knowledge to help you net local salmon and elusive sea trout. Explore the best fishing pools, enjoy a relaxing afternoon and breathe in the peace of the riverbank before returning to the estate to end the day with a warming, tasting flight of whisky.

TOWN & CITY

Nestled in 300 acres of unspoilt parkland, our estate offers the best of both worlds. A tranquil, countryside escape with charming market towns and vibrant city culture just minutes away.



DAY TRIPS & EXCURSIONS



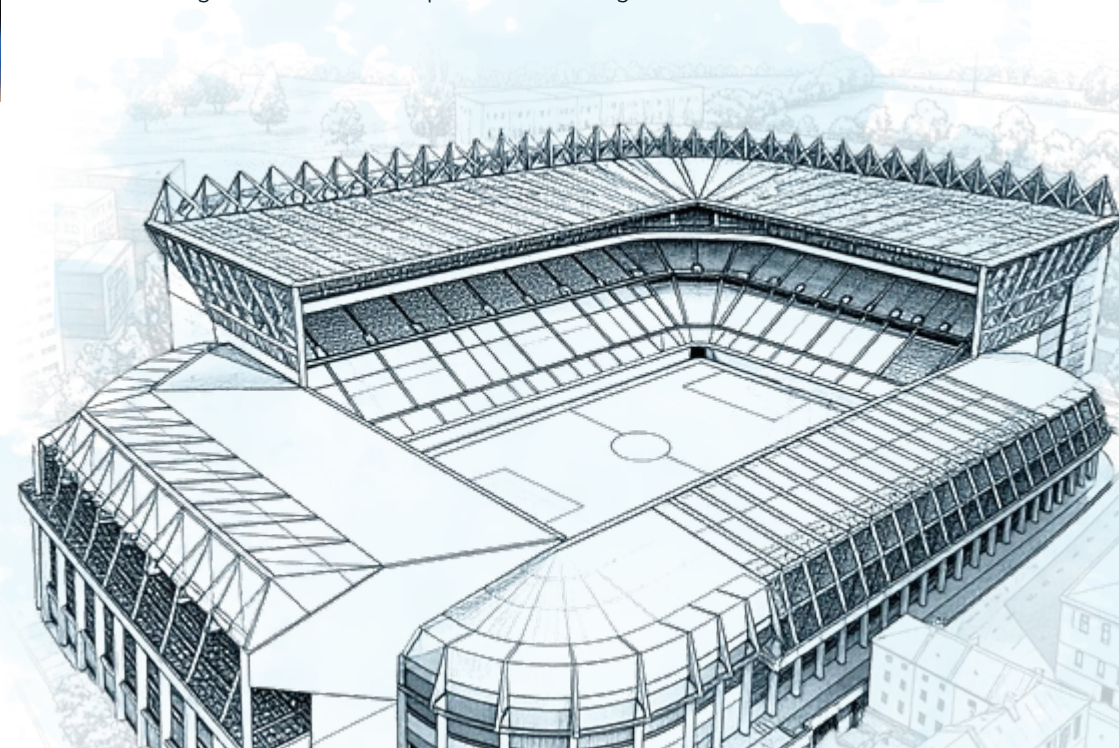
From the cobbled streets and artisan shops of Corbridge, to a relaxed lunch and time to explore the ancient abbey of Hexham and a day spent exploring Alnwick's gardens and world-famous book shop. Wherever you want to go, our team is on hand to help you plan the perfect day with personalised tours and excursions to Northumbrian villages, towns and landmarks.

THE HOME OF FOOTBALL

One city, one club. Step onto the field at St James' Park to experience the unrivalled passion of Newcastle United. Arrive by chauffeur for a private stadium tour, with behind the scenes magic from a club expert, returning to the estate with a premium football gift.

PERSONAL SHOPPING EXPERIENCE

Home to theatres, art galleries and museums, Newcastle is alive with the culture of the north east. Come home with more than memories with a chauffeured personal shopping experience. Sweep through the doors of Fenwick designer department store for a day dedicated to retail therapy. Enjoy lunch and a glass of Laurent-Perrier Champagne before returning to a luxury Fenwick hamper in your room.



ESTATE EXPERIENCES



A haven of calm luxury, set in 300 acres of peaceful parkland and bordered by unspoilt Northumbrian countryside - time on the estate is always well spent.

From award-winning dining and tailored wine tasting experiences to world-class golf days, our team is dedicated to curating an unforgettable stay that's just for you.

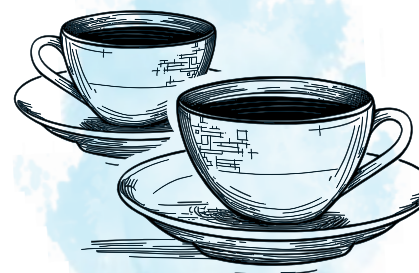
To discuss tailoring your stay, contact our experienced team at: info@matfenhall.com or call **01661 886 500**



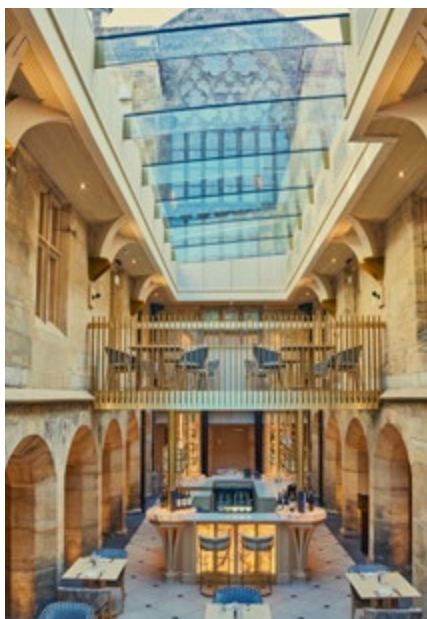
DINE

With a focus on fresh, Northumbrian produce and award-winning craftsmanship, our unique dining destinations set the scene for special celebrations and moments of indulgence. From relaxed afternoons in our green and peaceful grounds to an evening of true romance and opulence - your table awaits.

AFTERNOON TEA



Timelessly elegant, afternoon tea is a quintessentially English tradition and the perfect way to enjoy time together. Tiers of exquisitely delicate patisserie, homemade scones and seasonal savouries are served in our regal Drawing Room, with a fireplace originally commissioned for Buckingham Palace. For extra indulgence, choose Laurent-Perrier Afternoon Tea - accompanied by a tasting flight of Harmony, Brut and Rosé Champagne.



AL FRESCO DINING

Bright afternoons and languid summer evenings, the radiance of Le Jardin Hollandais beckons for the perfect outdoor dining experience. Sit down to seasonal, table d'hote menus from Cloisters restaurant or a freshly-made picnic, surrounded by the blossom and birdsong of our tranquil gardens. Enjoy a relaxed lunch or romantic evening meal served with unspoilt views of peaceful parkland and the rolling Northumbrian hills, gilded by sunlight.





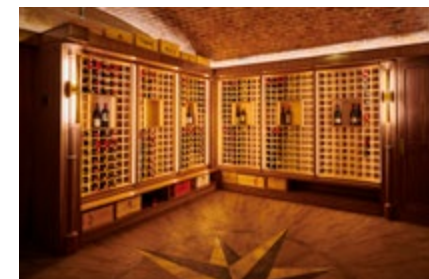
AWARD WINNING DINING

Northumberland's only 3 AA Rosette restaurant, Emerald is the jewel in the crown. Wreathed in ornate oak panelling and with magnificent countryside views, slow down and savour the moment with an exquisite 8-course Tasting Menu Experience. With a focus on using the finest, carefully sourced ingredients, each menu is crafted to flow with the seasons and celebrate produce from the fields, forests and shores of Northumberland.



WINE TASTING

Step beneath the beams of the Great Hall to discover our charismatic Wine Cellar. Enjoy a private tasting session with our Head Sommelier to travel the world, glass by glass and enjoy fine vintages served in optimum condition. With an emphasis on quality, each Wine Tasting Experience is tailored to individual taste and preference to uncork perfection every time.



GOLF

At Matfen Hall, it's not just golf - it's an opportunity to fall in love with the game all over again. Play top-rated courses, set in the unparalleled peace of our parkland estate, and up your game with world-class facilities in our state-of-the-art Golf Lab.

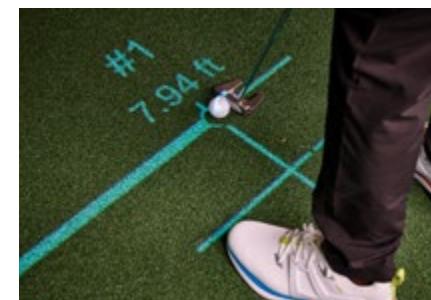


THE SIMULATOR STUDIO

Transform your game with the ultimate virtual golf experience in the Simulator Studio. Tee off in any weather to play championship courses including Royal Troon, The Old Course and Bethpage with our cutting-edge Foresight Hawk Golf Simulator. Book a solo session or get together for a tournament with friends and family, enjoying hot food and chilled drinks served straight to your studio.

PGA PRO COACHING

Reach your individual goals with one-to-one coaching in our Teaching Studio. Our PGA pro will work with you, using GC Quad technology and a PuttView laser-guided green to assess and analyse your form before drawing up a personal plan to overcome problem areas and improve every aspect of your game with friendly and professional guidance.





MATFEN HALL

COUNTRY HOTEL, SPA & GOLF ESTATE

MATFEN HALL, MATFEN, NORTHUMBERLAND, NE20 ORH